



4564-ES DE-STAIN

SPECIALTIES FOR MAINTENANCE AND SANITATION SINCE 1947

UNIQUE NEW CLINGING CHEMICAL RENEWS STAINLESS STEEL FOR REMEDIAL CLEANING OF QUARRY TILE, CERAMIC TILE, MASONRY

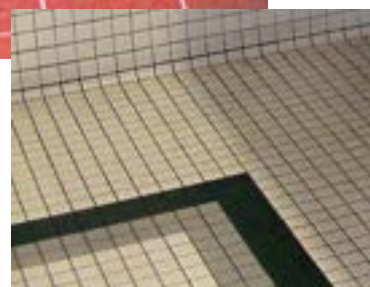


BRIGHTENS
STAINLESS STEEL



WHITENS
GROUT

REMOVES
SOAP SCUM



NEW—3 WAY ACTION: CLEANS • BRIGHTENS • DEODORIZES

STAINLESS STEEL—De-Stain removes scum build-up, soap and detergent haze and water hardness residue. Brings out original glossy appearance.

RENEWS—Unglazed or unsightly ceramic surfaces can be etched clean with De-Stain.

RESTORES appearance and cleanliness of food preparation areas, surgical and decorative surfaces.

REMOVES unsightly stains, soap scum, and discoloration without using chlorine. Longer surface contact, without run-off, due to new thick-bodied clinging action.

SPECIFICALLY FORMULATED FOR —

- Bottling Plants
- Hospitals
- Institutions
- Schools
- Industrial Laundries
- Motels
- Apartments
- Physical Therapy Equipment
- Restaurants
- Dye Vats
- Restrooms and Locker Rooms Everywhere

PRECAUTION: Test in an inconspicuous area for possible deglazing, dulling or etching of the surface before use of this product. Do not allow contact with glass, aluminum, marble, or glazed tile or ceramic surfaces.

**Packaged 48 Quarts Per Case
and in 55 Gallon Drums**

Rev. 3-22-18

Toll Free: 800-238-5150
Local: 901-363-4340
Fax: 901-375-3600

Delta Foremost Chemical Corp.
3915 AIR PARK ST. • P.O. BOX 30310 • MEMPHIS, TENNESSEE 38130-310

Visit our Web Site at:
www.deltaforemost.com





TECHNICAL DATA

FOREMOST 4564-ES DE-STAIN

Rev. 3-3-16

DESCRIPTION: An easy-to-use clinging liquid for shiny stainless steel, whiter grout and film-free tile surfaces. Removes unsightly stains, soap scum and discoloration. Removes rust stains from masonry surfaces. Does not contain chlorine. Renews appearance of surgical, kitchen and certain bathroom areas.

APPLICATION: Recommended for cleaning and brightening stainless steel.
May be used to brighten grouting and non-glazed tile floors in bathrooms and shower stalls.
For Remedial Cleaning—Not For Daily Use: De-Stain is formulated for neglected, badly soiled, scummed surfaces. Use a milder recommended Foremost product for daily or regular maintenance cleaning.

DIRECTIONS: **IMPORTANT:** Always test first for possible etching or deglazing in an inconspicuous area before use. If any sign of dulling occurs, do not use FM 4564-ES.

TO CLEAN AND BRIGHTEN STAINLESS STEEL, TEST FIRST.

1. Apply De-Stain directly to surface, working from bottom up. No dilution is necessary
For large vessels such as syrup tanks, place De-Stain in bucket and apply with brushes. If used daily, you may dilute De-Stain 50:50 with water.
2. Agitate.
3. Rinse thoroughly with water.

FOR REMEDIAL CLEANING—NOT FOR DAILY USE.

TO CLEAN QUARRY TILE AND ITS GROUTING, TEST FIRST.

1. Pour or mop De-Stain directly onto floor surface and allow to remain several minutes.
2. Brush manually or use an electric floor machine with brush attachment.
3. Rinse thoroughly with water while still wet. Do not allow De-Stain to dry on quarry tile surfaces.

Do not allow solution to contact glass, aluminum or marble.

PRECAUTIONS: **KEEP OUT OF REACH OF CHILDREN.** Contains ethylene glycol monobutyl ether and fluorides. May cause eye and skin irritation. Do not take internally. When handling, always wear chemical splash goggles and rubber gloves.

FIRST AID: EYES: In case of contact, immediately flush with plenty of water for at least 15 minutes. Get medical attention immediately. **INGESTION:** If conscious, give large amounts of lime water, or milk of magnesia or water. Get medical attention immediately.

Before using this product, read the Safety Data Sheet (SDS) for more detailed information regarding safe handling.