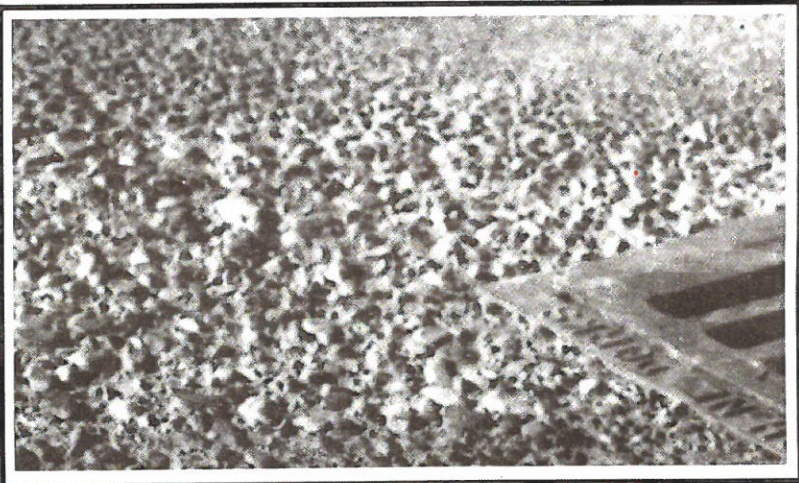


*Introducing...*

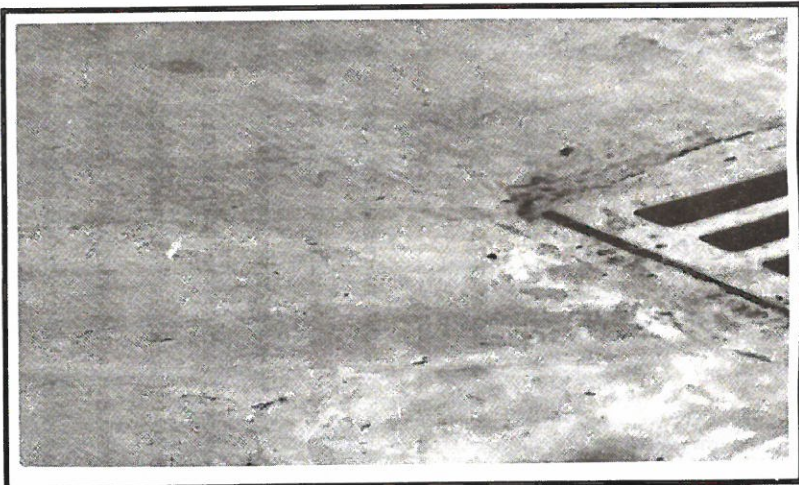
# Foremost 3348-ES CONCRETE PATCH And TOPPING

(POLYMER REINFORCED)



*Before Treatment*

**A Revolutionary  
Product Development  
That Solves  
Surface Maintenance  
Problems!**



*After Treatment*

Authorized by USDA  
for use in federally  
inspected meat and  
poultry plants.

Delta  
**Foremost**  
CHEMICAL

# *The Problem —*

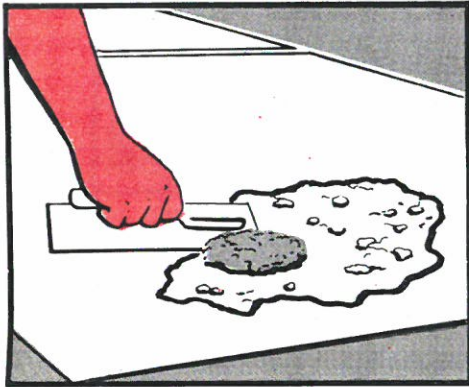
**WORN — BROKEN — CRACKED —  
ERODED (SPALLED, CHIPPED OR CRUMBLED) CONCRETE**

# *The Solution —*

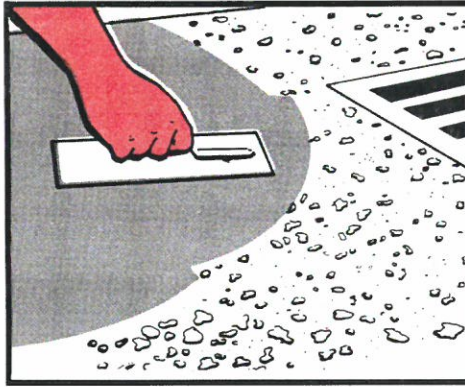
**Foremost 3348-ES Concrete Patch And Topping  
...Superior Strength And Adhesion**

Foremost Concrete Patch and Topping resolves the shortcomings of mortar and cement. Insures better impact strength, better compressive strength and better adhesion properties than ordinary concrete.

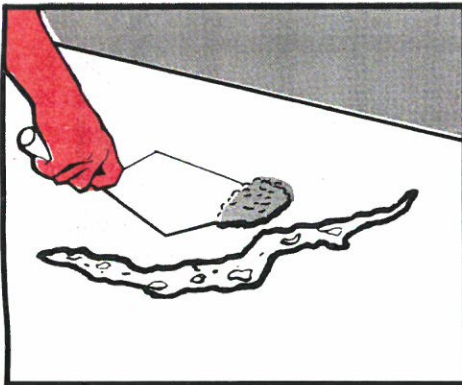
Phenomenal load bearing capacity, shock and vibration absorbent. More wear and weather resistant than original concrete. Hardens to a granite like surface. Takes 20 ton loads in 48 hours after application.



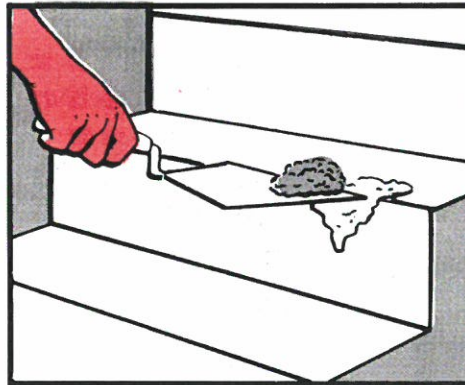
FILLS HOLES



RESURFACES SPALLED  
OR ERODED SURFACES



REPAIRS CRACKS



REFORMS STEPS & CURBS

## **Effective Long Lasting Repairs**

Foremost Concrete Patch and Topping is excellent for repairing holes, cracks and eroded (spalled, chipped or crumbled) surfaces of concrete.

Self-bonding concrete patch and topping adheres tenaciously to old concrete indoors or out. Easily applied with common concrete tools and can be feathered to 1/8" thick.

# Easiest-To-Use

## Most Versatile Surfacing Material Ever Formulated

Foremost Concrete Patch and Topping is virtually foolproof. One formula for any surface. Adheres to old concrete, brick, wood, metal, plastic and other substrates.

Mixing is not critical. Components may be mixed to a fluid consistency for filling cracks, or thicker for vertical surface patching.

Surface preparation is held to barest minimum. Only 2 components to mix, aggregate and liquid polymer. No water, additives, solvents or catalysts to add.

# Economical



**COMPLETE  
KIT  
COVERS  
535 Sq. Ft.  
At 1/8" Thick.**

### Kit Consists Of:

*4/10 Gal. Fiber Drums Aggregate [3348-A-ES]  
12/1 Gal. Containers of Co-Polymer Liquid [3348-B-ES]*

## What Satisfied Users Say About Foremost Concrete Patch . . .

*FM 3348-ES Concrete Patch has worked out very well for us. It was simply applied to our cracked concrete surfaces. We were able to feather it out to our desired depth. You have a real winner in this product.*

**Automotive Parts Distributor**

*FM 3348-ES Concrete Patch has been very effective in patching our cracked and spalled concrete. It's easy to mix, too. I would recommend the product to anyone.*

**Maintenance Superintendent, Radio Station**

*I am happy to say that the product has been effective in patching areas of a townhouse project that we are refurbishing. It's easy to mix and use. I would highly recommend it. Works very well on vertical surfaces also.*

**Home Building Contractor**

*We are pleased with your excellent product. FM 3348-ES Concrete Patch & Topping. It was easy to mix and we were able to save re-pouring a lot of new concrete slabs. I especially like the way you can feather it out to the depth you need.*

**Electrical Contractor**

**Production Areas  
Of Food Plants  
May Be Treated With  
Foremost Concrete Patch  
NO SOLVENT FUMES**

## Enthusiastically Recommended For Topping And Patching . . .

Warehouse Floors  
Factory Floors  
Driveways  
Schoolyards  
Sidewalks

Parking Areas  
Walkways  
Service Station Aprons  
Runways  
Docks

**ANYWHERE THAT CONCRETE NEEDS REPAIR!**

# TECHNICAL DATA

## FOREMOST 3348-ES CONCRETE PATCH AND TOPPING

### DESCRIPTION

FM 3348-ES CONCRETE PATCH AND TOPPING is a two component product. Foremost 3348-A-ES is the dry component and Foremost 3348-B-ES is the liquid mix. This is a specifically formulated aggregate modified with a polymer designed to combat the shortcomings of mortar and concrete.

It is self-bonding and adheres tenaciously to old concrete, brick, wood, metal, plastic and other substrates. It is fast, economical and easy to use. Foremost 3348-ES CONCRETE PATCH AND TOPPING hardens to a granite-like surface and repairs permanently.

CONCRETE PATCH AND TOPPING has a higher compressive strength and is more resistant to oils, mild chemicals, and moisture than ordinary concrete. It has the tensile strength and adhesion to resist freeze-thaw lifting, durability to withstand weather and ultraviolet degradation. The tough, water-resistant surfaces of the CONCRETE PATCH AND TOPPING help to protect pavement and sidewalk repair against destructive effect of salt solutions used during the winter.

### APPLICATION

Foremost 3348-ES CONCRETE PATCH AND TOPPING is recommended for fast and economical repairs and is easy to use on pitted sidewalks, driveways, ruts, holes, spalled floors, roofs, broken curbs, steps, ledges, etc., in industrial plants, food service industries, industrial ramps and decks, schools, churches and any other place concrete needs repairing.

### DIRECTIONS

NOTE: DO NOT APPLY OUTDOORS IF RAIN IS LIKELY OR IF TEMPERATURE IS BELOW 40°F.

1. Surface to be treated should be clean and free from oil and grease. Sweep thoroughly to remove dirt and loose debris.
2. Dampen the area to be treated by brushing on a coating of the polymer.
3. Add 1 part (volume) of the liquid polymer to five parts (volumes) of the aggregate. Mix thoroughly.

NOTE: Do not add additional polymer as this is fully enough binding agent. Continue mixing until you have a uniform, thin, workable mixture.

4. Apply mixture to cracks, potholes and eroded areas and smooth to desired surface texture using regular cement working tools. Brush, broom or serrated trowel can be used to roughen, if desired.
5. If drying conditions are excessively fast, cover with burlap or plastic covering.

Do not apply layers more than one inch thick. Allow 24 hours drying time between layers.

### PRECAUTIONS

#### KEEP OUT OF REACH OF CHILDREN.

May cause eye and skin irritation. Avoid contact with eyes and prolonged contact with skin. Wash thoroughly after handling. Do not take internally. Do not mix with foodstuffs.

FIRST AID: In case of contact with eyes, flush immediately with plenty of water for at least 15 minutes. For skin, flush with plenty of water. Get medical attention if irritation persists. Wash clothing before reuse.

Before using this product, read the Safety Data Sheet (SDS) for more detailed information regarding safe handling.

*Foremost Concrete Patch . . . First in Performance . . . First in Convenience  
For More Information . . . See Your Delta Representative*

*Or Call TOLL FREE 1-800-238-5150*



FAX 901-375-3600

LOCAL 901-363-4340

Visit our web site at: [www.deltaforemost.com](http://www.deltaforemost.com)

Rev. 5-91

**Delta Foremost Chemical Corp.** 3915 AIR PARK STREET MEMPHIS, TENNESSEE 38118

