



1817

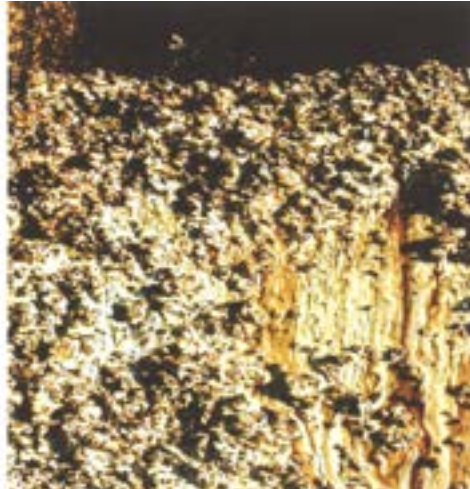
CITRI-KOTE ASPHALT & TAR REMOVER

SPECIALTIES FOR MAINTENANCE AND SANITATION SINCE 1947

FASTER CLEAN-UP OF ASPHALT AND TAR



Easily Applied



Clings, Penetrates, Dissolves



Flush Off

STAYS WHERE YOU PUT IT – NO COSTLY RUN OFF!

ECONOMICAL — Product clings and penetrates buildup. Exposure time is greatly increased resulting in more thorough cleaning without multiple applications. Less product usage means less clean-up cost.

EASY-FAST — Apply with a common pump-up sprayer. Opaque liquid easily shows where product is applied. Solvent action begins immediately to dissolve buildup. Simply flush with water pressure or steam. Unique wetting and emulsifying properties give film-free drying.

PROTECTS — NONCAUSTIC — NONCORROSIVE. May be used on all metals and painted surfaces. Pleasant citrus fragrance.

ENTHUSIASTICALLY RECOMMENDED FOR tar and asphalt removal from asphalt pavers, material transfer devices, steel wheel rollers, tank wagons, and roofing equipment, etc. Cleans spillages from concrete, stone, brick, tile and other masonry surfaces.

**CONTAINS NO CFC'S OR OTHER
OZONE DEPLETING SUBSTANCES**

NO PETROLEUM DISTILLATES

NO VOC'S

NO HAP'S

A NATURAL SOLVENT

Packed in 55 Gallon Drums

Rev. 6-13-19

Toll Free: 800-238-5150
Local: 901-363-4340
Fax: 901-375-3600

Delta Foremost Chemical Corp.
3915 AIR PARK ST. • P.O. BOX 30310 • MEMPHIS, TENNESSEE 38130-310

Visit our Web Site at:
www.deltaforemost.com





TECHNICAL DATA

FOREMOST 1817 CITRI-KOTE ASPHALT AND TAR REMOVER

Rev. 6-13-19

DESCRIPTION: A heavy duty natural solvent designed for efficient removal of asphalt, roofing tar, oil, grease and road tar. Thickened formula clings to surfaces, giving longer contact time and requiring less product. Rinses freely from all surfaces when flushed with water. It is also an excellent grease solvent for regular maintenance work around industrial equipment.

APPLICATION: This product is recommended for use on road primer tanks, auxiliary tanks, transport trucks, earth moving equipment, railroad equipment and industrial equipment for ordinary tar and asphalt removal. It is also successfully used for removal of roofing tar and asphalt from concrete, stone, brick, tile, and other masonry surfaces. It is NOT recommended for automotive finishes.

DIRECTIONS: To remove roofing tar spillage and stains from masonry surfaces, apply with long handle brushes or mops, allow to set, and flush with water. For stubborn deposits, scraping may be required to assist the solvent action.

For removing asphalt from surfaces of machinery, industrial equipment, trucks, etc., application can be made by spraying or brushing the undiluted concentrate over the surface involved, and pressure rinsing with water. Contact time may be altered to meet specific needs and can usually be best determined by the user.

PRECAUTIONS: Do not take internally. May cause eye irritation. Avoid contact with eyes.

FIRST AID: In case of contact, immediately flush eyes with large amounts of water until burning ceases. Seek medical attention immediately if irritation persists. Before using this product, read the Safety Data Sheet (SDS) for more detailed information regarding safe handling.

FACTS

BENEFITS

- | | |
|-----------------|---|
| 1. Economical | 1. Thickened formula requires much less product than thin ready-to-use citrus formulas. |
| 2. Fast | 2. Unique solvent activity takes only minutes to dissolve bituminous buildup. |
| 3. Water rinses | 3. Wetting and emulsifying properties give film-free drying after the water rinse. |
| 4. Efficient | 4. Removes tar and asphalt 10 to 15 times more effectively than ordinary petroleum distillates. |
| 5. Protects | 5. Noncaustic, noncorrosive. Harmless to aluminum and other metals. |