



## FOREMOST ANTI-SLIP

**1229-ES**  
Cautionary  
Red

**1230-ES**  
Safety  
Yellow

**1231-ES**  
Beach  
White

**1232-ES**  
Light  
Gray

**SPECIALTIES FOR MAINTENANCE AND SANITATION SINCE 1947**

## PROTECTS AGAINST FALLS AND INJURIES



**STOPS SLIPS  
AND  
REDUCES ACCIDENTS**

### ECONOMICAL - VERSATILE

Steps • Ramps • Catwalks

**FOREMOST ANTI-SLIP** can be used anywhere protection against skidding and accidents is desired. Provides sure grip on floors that become wet from spillage or humidity condensation.

**VERSATILE**—Bonds and adheres tenaciously to concrete, tile, metal, wood, or most any rigid surface.

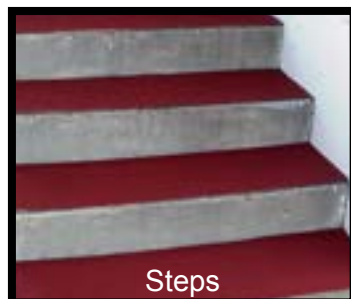
**DURABLE**—A long lasting carpet of safety that withstands heavy traffic.

**ECONOMICAL**—150-175 square feet per gallon.

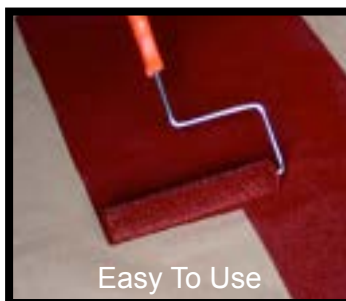
**EASY-TO-USE**—Nothing to add. Simply stir and apply with roller, to a clean substrate, for speed and ease of application. (A second coat may be applied 4-6 hours after the first coat if desired).



Ramps



Steps



Easy To Use

**1229-ES**  
Cautionary  
Red

**1230-ES**  
Safety  
Yellow

**1231-ES**  
Beach  
White

**1232-ES**  
Light  
Gray

### — NOTE —

Helps prevent loss of production—saves on insurance. Use Anti-Slip for better assurance against falls and injuries for your employees and the public.



### EXCELLENT FOR —

- Warehouses
- Industrial Plants
- Ramps, Loading Docks
- Food Plants
- Kitchens
- Showers
- Walkways
- Scaffolding
- Stairs
- Boat Docks
- Truck Beds & Running Boards
- Forklifts
- Railroads
- Bus & Delivery Fleets
- Swimming Pool Areas

### NOTE—

**ANTI-SLIP** coating (1229-ES, 1230-ES, 1231-ES, 1232-ES) contains less aggregate and are designed to cover larger foot traffic surfaces.

**SURE STEP H.D.** coatings (1225-ES, 1226-ES, 1227-ES, 1228-ES) are a heavy aggregate coating designed for ramps, steps etc. and will stand fork lift traffic.

**Packed in 12/1 Gallon Cases**

Rev. 4-23-15

Toll Free: 800-238-5150  
Local: 901-363-4340  
Fax: 901-375-3600

**Delta Foremost Chemical Corp.**  
3915 AIR PARK ST. • P.O. BOX 30310 • MEMPHIS, TENNESSEE 38130-310

Visit our Web Site at:  
[www.deltaforemost.com](http://www.deltaforemost.com)





# TECHNICAL DATA

## FOREMOST ANTI-SLIP

Rev. 5-8-15

**DESCRIPTION:** A fast-drying epoxy-based anti-skid coating. It has a range of desirable properties including excellent adhesion to a variety of substrates such as concrete, metal, wood, or tile surfaces. Foremost Anti-Slip provides an attractive carpet for protection against accidents.

**APPLICATION:** Foremost Anti-Slip is recommended for use anywhere slip-proof protection is desired. It can be applied in industrial plants, food service industries, warehouses, schools and churches: to ramps, steps, ledges, decks, bulk transports and anywhere slip-proof protection is needed for safety to personnel.

**TYPICAL COVERAGE:** 150-175 sq. ft. per gallon depending upon method of application. Damaged or worn areas are easily touched up.

**NOTE:** Where there is heavy forklift traffic, we recommend our heavy duty **Foremost Sure Step H.D.**

**DIRECTIONS:** **NOTE:** Do not apply outdoors if rain is likely.

1. Surface to be coated should be clean and free of oil, grease, wax, dirt, rust, mill scale, or other contamination. Surface must be completely dry before application. **Do not apply Foremost Anti-Slip over existing paint, seal or areas under constant immersion of water or oil.**
2. Stir thoroughly.
3. It is ready-to-use without thinning.
4. Mask area to be coated using masking tape. It is generally recommended that Foremost Anti-Slip be applied in strips 6 to 8 inches wide perpendicular to the flow of traffic.
5. Once areas to be coated are masked, pour enough Anti-Slip on each area to cover the surface and smooth out using a short napped mohair paint roller.
6. Leave masking tape down at least 4 hours before removing.
7. Allow to cure thoroughly before using. Foremost Anti-Slip will dry in 4 hours at 70°F. It is best for foot traffic to keep off the surface for 12 hours and rolling traffic 24 hours. In cooler weather, allow more time for drying.

**NOTE:** Application tools may be cleaned by rinsing immediately with paint thinner, toluol or similar solvent.

**PRECAUTIONS:** **KEEP OUT OF REACH OF CHILDREN.** Contains xylene. **MAY BE HARMFUL OR FATAL IF SWALLOWED.** Do not take internally. Flammable liquid and vapor. Keep away from heat, sparks, and flame. Keep container closed. Use with adequate ventilation. Avoid contact with eyes, skin and clothing.

**FIRST AID: EYES:** Flush with large amounts of water, lifting upper and lower lids occasionally. Get medical attention. **SKIN:** Wash thoroughly with soap or mild detergent and water. **INGESTION:** Get immediate medical attention. **INHALATION:** If affected, move individual to fresh air. If breathing is difficult, administer oxygen and get medical attention.

Before using this product, read the Safety Data Sheet (SDS) for more detailed information regarding safe handling.